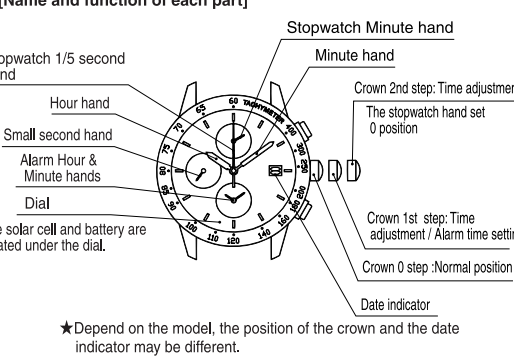


Thank you for your purchase of our product. To ensure prolonged use and optimum performance, please read this instruction manual carefully and familiarize yourself with the terms of the guarantee. Please keep this Instruction Manual in your hand and refer in time of need.

- ① This is an analog quartz oscillation watch.
② This watch moves to charge the recharge battery which strikes the solar cell under the watch face into electric energy.
③ This watch uses the recharge battery instead of the silver oxide battery cell in the common quartz watch.
④ It displays the current time using the hour hand, the minute hand, and the second hand.
⑤ In addition to displaying the time, this watch also has a calendar (date function), the stopwatch function/measures in 1/5 second increments with 50 minutes watch and the alarm function (12 Hours system).
⑥ The stopwatch also can measure split times (elapsed time from a starting point to a certain point selected by the user).
⑦ When the battery runs low, the second hand will advance 2 seconds per tick to alert you that the battery should be replaced. (Low battery alert)
1. Number of frequency 32,768Hz/per sec.
2. Drive system Step motor
3. Daily accuracy Month-long average ± 15 sec. (When wearing watch on your wrist at 5°C to 35°C.)
4. Functions (Time function) Hour, Minute, Small Second hand (1-second intervals) (Stopwatch function) Stopwatch 1/5 Second hand (1/5 second intervals, 60 seconds/round), Stopwatch Minute hand (1-minute intervals, 60 minutes/round) (Alarm function) Alarm hour hand, Alarm minute hand (Second hand setter, reset switch, quick date advance, Low battery alert, Overcharge prevention mechanism)
5. Additional functions
6. Operating temperature -10°C to +60°C
7. Power cell Recharge battery 1PCS
8. Power cell life Six months after replacing a new cell. This applies when the stop watch function is used for 1 hour a day and the alarm use less than 1 time (20 seconds), respectively.
- *Product specifications may be changed without prior notice.



[How to recharge the watch]
● This watch will start running whenever light strikes its face.
● This watch will continue to run for approximately 6 months once it is fully charged.
● If it is not exposed to a light it may stop running in about 6 months.
● Please expose it to light when to restart the watch or the watch's power is low. Even if the watch is at a stop, the instant-startup function instantly restores operation at 2-second steps when it is exposed to sunlight or strong light.
● However, in the state where the operation turned to 2-second steps, further expose the light until to the watch become normal 1-second step operation.
● Continue charging until the second hand begins to move at 1-second steps. (refer to the standard required charging time).
● It does not need to be fully charged. However we recommend fully charging it when you start to use the watch.
● The 2-second steps operation means the second hand move at 2-second steps.

CAUTION
(Precautions when recharging)
● Be careful the watch internal parts may become overheated or damaged, do not put on bright light (such as the lighting of taking photographs, the spot light, the incandescent lamp similar) too close when you charge the battery.
● Please note when the watch charges the sunlight put on the dashboard of car, it may become overheated.
● Keep the watch internal temperature below 60°C.

[When the second hand begins to move at 2-second steps during use]
When the power-low alert is activated, the second hand begins to move at 2-second steps. When this occurs, there is a possibility that the watch will stop running within a day, so charging is necessary. Charge the watch sufficiently, refer to the Guideline to recharge times.
● It doesn't failure which the second hand moves at 2-second steps Although the stopwatch function doesn't working.
● The stopwatch hand reset to 0 minute 0 second when the second hand moves at 2-second steps.
● The alarm function cannot set when the second hand moves at 2-second steps. It doesn't failure.
● The alarm time setup is cancel, and the sound stops sounding when the second hand moves at 2-second steps.

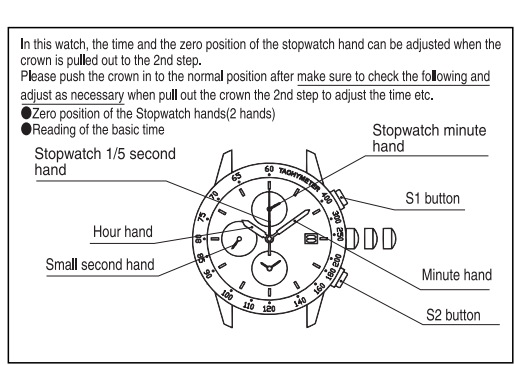
Light level (Lux)	Light source	Recharge place (Standard)	The time of need to fully recharge	The recharge time to become definitely 1-second steps	The recharge time of need to run the watch for one day
700	Fluorescent lamp	In ordinary office	-	Approx. 60 hours	Approx. 3 hours
3000	Fluorescent lamp	30 W 20 cm	Approx. 110 hours	Approx. 15 hours	Approx. 35 minutes
10000	Sunlight	Cloudy weather	Approx. 30 hours	Approx. 4 hours	Approx. 10 minutes
100000	Sunlight	Fine weather	Approx. 5 hours	Approx. 40 minutes	Approx. 5 minutes

*The values in this column show the require charging time when a watch at a stop is exposed to light and when a second hand changes from 2-second steps to definitely 1-second steps. The 1-second steps can be achieved even if charging is not performed up to this required time, but in that state, it can sometimes revert to 2-second steps, and so perform charging with this time as a guide.
*The charging times are based on a standard model. The actual time need may be different with model of dial design.
*This watch has the over-charge prevention mechanism, it doesn't broke that charge over the time of need to fully recharge. And it works the over-charge prevention mechanism automatically when this watch will be fully charge.

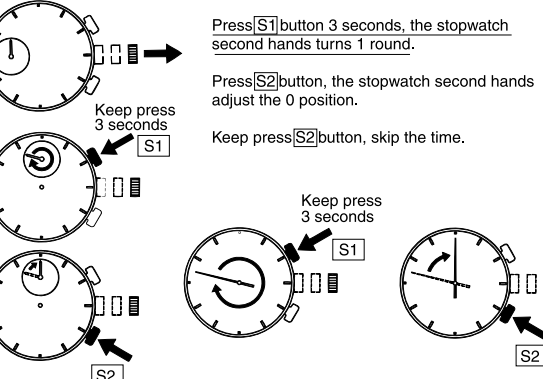
◆ Zero position adjustment / Time adjustment of the stopwatch hands

[Screw-lock type crown model]
Depending on the model, it will be lock the crown screw into the case, the screw-lock type crown model. This type of watch can be operated as describe below:
① When adjusting the date and time, at first turn the crown counterclockwise and loosen the screw.
② After adjusting the date and time, turn the crown clockwise while pushing it, and tighten the screw firmly until stops.

[Screw-lock type button model]
Depend on the model, it will be lock the button ring (the ring around the button) into the case, the screw-lock type button model. This type of model, please carry out the following operation.
① Before operating the button, first turn the button ring to the counterclockwise to loosen it until stop the screw.
* If it is not loosened completely, the button may not operate. Also do not force it to turn.
② After operating the button, turn the button ring to the clockwise until stop the screw.
* Do not tighten it excessively.

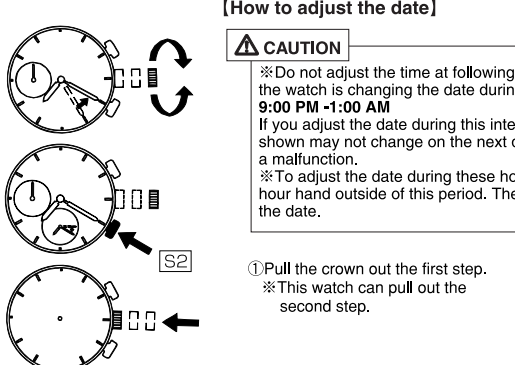


① Pull the crown out the second step when the small second hand is at the 12 o'clock position. (The small second hand will stop moving.)
* Forcible reset of the stopwatch is carried out when it is measuring.
* Please adjust (4) time adjustment when the stopwatch 2 hands set 0 position.
[Zero position adjustment of the stopwatch 2 hands]
② Next, adjust the stopwatch 2 hands point at 0 position. Press [S1] button 3 seconds, stopwatch minute hands turns 1 round. Press [S2] button, stopwatch minute hands adjust the 0 position. Keep press [S2] button, skip the time.



③ It can adjust the stopwatch again. Please reunite in this turn.
Press [S1] button for 3 seconds. The stopwatch minute hands turns 1 round that it is ready for adjustment. Press [S2] button to reset it is to '0' position.
Press [S1] button for 3 seconds. The stopwatch second hands turns 1 round that it is ready for adjustment. Press [S2] button to reset it is to '0' position.
Press [S1] button for 3 seconds. The stopwatch second hands turns 1 round that it is ready for adjustment. Press [S2] button to reset it is to '0' position.
* You can readjust these items any number of times.

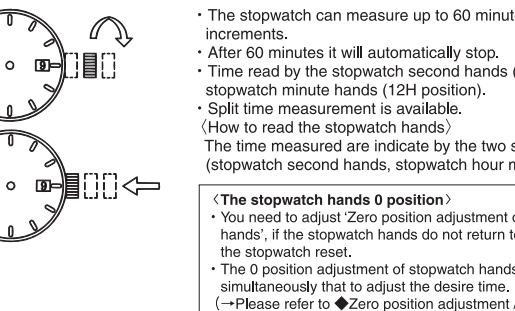
[Time adjustment]
④ Turn the crown, adjust the time.
* Since this watch has the calendar function, please do not confuse AM and PM setting when adjust the time. The date will change the time is 0:00 AM.
* When setting the time, first advance the hand a few minutes past the current time, and then back the hand slowly to the correct time.
⑤ Press [S2] button, alarm hands sets current time. Keep press [S2] button, skip the time.
⑥ All adjusting finished, push the crown into the normal position (0 step), when setting it to the time signal.



CAUTION
* Do not adjust the time at following time zone, since the watch is changing the date during that period. 9:00 PM - 1:00 AM
If you adjust the date during this interval, the date shown may not change on the next day or it may cause a malfunction.
* To adjust the date during these hours, first turn the hour hand outside of this period. Then you can adjust the date.

◆ How to use the stopwatch

② Turn the crown clockwise, adjust the date.
③ Push the crown into the normal position (0 step)
* Depend on the model, the position of the date indicator and the crown may be different.
④ Adjust the date at the end of month
In months with thirty or fewer days than it, adjust the date on 1st day of the next month.



• The stopwatch can measure up to 60 minutes in 1/5 second increments.
• After 60 minutes it will automatically stop.
• Time read by the stopwatch second hands (center) and the stopwatch minute hands (12H position).
• Split time measurement is available. (How to read the stopwatch hands)
The time measured are indicate by the two stopwatch hands (stopwatch second hands, stopwatch hour minute hands).
[The stopwatch hands 0 position]
• You need to adjust Zero position adjustment of the stopwatch hands, if the stopwatch hands do not return to '0' position when the stopwatch reset.
• The 0 position adjustment of stopwatch hands are adjust simultaneously that to adjust the desire time. (→ Please refer to ◆ Zero position adjustment / Time adjustment of the stopwatch hands.)

How to reset the stopwatch
• When the stopwatch hand is moving
① Press the [S1] button to stop the stopwatch.
② Press the [S2] button to reset the stopwatch.
• The stopwatch will stop counting in the three following cases
● Fully stopped
● Stopped showing the split time (stopwatch keeps counting time)
① Press the [S2] button and the stopwatch hands will advance rapidly. The stopwatch will start counting.
② Stop the stopwatch with the [S1] button.
③ Reset it with the [S2] button.
● Stop while showing the split time (the stopwatch stops counting)
① Press the [S2] button and the stopwatch hands will advance rapidly and then stop.
② Reset it with the [S2] button.

Standard measurement
Start → Stop → Reset
Accumulated elapsed time measurement
Start → Stop → Restart → Stop → Reset
Can be repeated any number of times

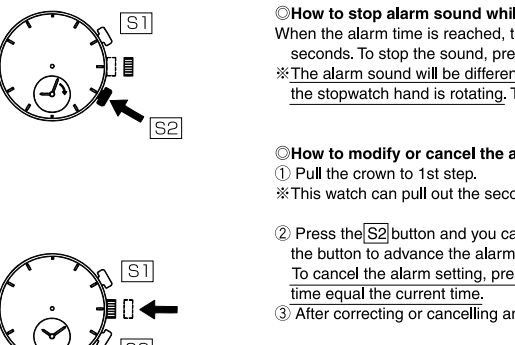
Split time measurement
Start → Split → Split Release → Stop → Reset
Can be repeated any number of times
Measurement of two competitors
Start → Finish time of the 1st competitor → Finish time of the 2nd competitor → Reset
During this period, the stopwatch will show the time of the 1st runner.

How to adjust the alarm setting
① Pull the crown to 1st step.
* This watch can pull out the second step.

How to use the alarm (one time alarm)
• This is alarm will only sound once, at the specified time. After the alarm has sounded, the alarm setting will be cancelled.
• The alarm time can be set up to 11 hours and 59 minutes ahead of the current time, in one minute steps.
The alarm hands display the current time when the alarm time is not set. They show the alarm time setting when the alarm is set.
[How to adjust the alarm time setting]
Adjust the alarm time setting using the time adjustment instructions for the basic watch. (→ See ◆ Zero position adjustment / Time adjustment of the stopwatch hands)
① Pull the crown to 1st step.
* This watch can pull out the second step.

◆ Handling precautions

② Press the [S2] button to set the alarm time. Keep pressing the button to advance the hands rapidly.
* If the hands go past the desired time, advance them further to set the alarm time. When the alarm time setting is the same as the current time, the alarm time will be cancelled.
If you keep pressing the [S2] button, when the alarm time equals the current time the hands will stop. To set the alarm time, release the [S2] button and press it again.
* When current time is 10:08 AM, the alarm can be set for as late as 10:07 PM.
③ After you have completed setting the alarm, push in the crown.
* The alarm will not sound while the crown is pulled out.



How to stop alarm sound while sounding.
When the alarm time is reached, the watch will sound an alarm for 20 seconds. To stop the sound, press either the [S1] button or [S2] button.
* The alarm sound will be different from the normal alarm sound while the stopwatch hand is rotating. This is not failure.
How to modify or cancel the alarm setting
① Pull the crown to 1st step.
* This watch can pull out the second step.
② Press the [S2] button and you can modify alarm setting. Keep pressing the button to advance the alarm time rapidly.
To cancel the alarm setting, press the [S2] button and make the alarm time equal the current time.
③ After correcting or cancelling an alarm, press in the crown.

◆ Water-proof processing band

(1) Water-proof processing band

WARNING
① The watch, a water resistant for daily use (3 atm) is available for face-washing etc., but avoid putting it in the water.
② The watch, an enhanced water resistant for daily use I (5 atm) is available for swimming, etc., but do not put it on all diving that include skin diving.
③ The watch, an enhanced water resistant for daily use II (10 or 20 atm), is available for skin diving, but not for scuba diving using an air cylinder and saturation diving using helium gas.

Type	Condition of use	Without WATER RESISTANT (WATER RESIST)	Displays (Dials or Case back)
Non water resistant		X	X
Water resistant for daily use		X	X
Water resistant watches		X	X
Diver's watches		X	X

On some models WATER RESISTANT** bar is shown as W.R.**bar.
*Confirm an inscription of water-proof level on the dial or the case back of the watch, and use correctly according to the above-mentioned scopes of availability.

CAUTION
④ Make sure the crown is pushed in (0 step) when wearing the watch. If your watch is the screw-lock type crown and the button, make sure these are securely tightened.
⑤ Do not turn or pull out the crown and the button under the water in the wet condition. Water may enter inside the watch and degrade water-proof capability.
⑥ For a non-water resistant for daily use watch, pay attention to temporary splashed waterdrops (water splash at facewashing, rain etc.) and sweat. If the watch becomes wet from water or sweat, wipe it off with dry soft cloth.
⑦ Even if you are wearing a watch that is a water resistant for daily use, do not expose it directly to the powerful flow of water running from a water tap. The water pressure exceeding waterproofing performance can be encountered and may deteriorate water proofness.
⑧ If your watch is water resistant for daily use, rinse the case with fresh water thoroughly when it is dipped in seawater. Then wipe the watch to prevent rust.
⑨ If the leather band is dipped in the water, it may lose its durability and be discolored or ungilded. When using the watch in the water, replace the band with other material (metal or rubber) in advance.
⑩ There are slightly humidity inside the watch. If outer temperature is lower than inside the watch, the glass surface may become cloudy. If the cloudy of moisture is only temporary, the internal mechanism will not be damaged. However, if it remains cloudy for a long time, or if there is moisture inside the watch, consult your purchase shop or the Customer Service.

Power supply (Recharge battery)
① This watch uses a special recharge battery that is different from the normal batteries. The recharge battery can return to charge, it different from the normal batteries. It may fall the battery capacity and the charge efficiency depends on usable years and the environment. Please contact to your purchase shop or the Repair Service Center if you feel the fall of performance.
② Please note that this watch doesn't keep the amount of charge, even if you pull the crown out and stop the watch.
WARNING
① Do not pull out the recharge battery.
② Please contact your purchase shop or the Repair Service Center when replace recharge battery, because the replacing needs the technical knowledge, the special tool and the technology.
③ Note carefully that if installed in the ordinary silver oxide battery were even cause to explodes, overheats or ignites. The watch is designed, if the ordinary silver oxide battery installed, it will not provide power to the watch.

◆ Allergic reactions ◆ Luminous light ◆ Water-proof processing band

(4) Shock
① This watch is not influenced by light sports such as golf. When you are engaged in more vigorous sports, you should take the watch off.
② Do not drop the watch on the floor or hit it against the hard surfaces.

(5) Magnetic field
① The watch is not influenced by the electromagnetic fields produced by home electric appliances.
CAUTION
② Keep the watch away from the magnets, magnetic health aids (gadgets for relieving stiff shoulders, bracelets, etc.), electric mah-jong tables, etc., which produce the strong magnetism.
③ If "ANTIMAG. I" or "ANTIMAG. II" is inscribed on the watch, it means that your watch has been made further resistant to the magnetism. Refer to the following for the strength of the display and the magnetic field which can be borne.
● ANTIMAG. I It can withstand a magnetic field up to 4,800 A/m (60 gauss)
● ANTIMAG. II It can withstand a magnetic field up to 16,000 A/m (200 gauss)
④ If the watch is left in a strong magnetic field for along time, its part will become magnetized and result in a malfunction.
⑤ The watch that is damaged by strong magnetic fields may gain or lose time for a while. However if it is moved away from the magnetic field it will regain its original accuracy. In this case, correct the time.

⑥ Refer to the table below for strength of the magnetic field about the electric or magnetic products produced.

Name of product	Magnetic field strength (unit: A/m)	Judgment
Magnet for holding papers (DC)	23,900 ~ 71,600 (300 ~ 900 gauss)	X
TV set (AC, DC)	500 ~ 1,200 (6 ~ 15 gauss)	X
Refrigerator magnet (DC)	31,800 ~ 63,700 (400 ~ 800 gauss)	X
Magnet of telephone set speaker (DC)	2,400 ~ 3,600 (30 ~ 45 gauss)	X
Electric shaver (AC)	6,400 ~ 11,900 (80 ~ 150 gauss)	X
Stereo speaker (DC)	47,800 ~ 63,700 (600 ~ 800 gauss)	X
Furniture magnet (DC)	47,800 ~ 119,400 (600 ~ 1,500 gauss)	X
Magnetic pad (DC)	63,700 ~ 85,500 (800 ~ 1,000 gauss)	X
Magnet for necklace (DC)	28,700 ~ 63,700 (360 ~ 800 gauss)	X
Magnet stone of handbag (DC)	28,700 ~ 63,700 (360 ~ 800 gauss)	X

⑦ No influence. X: Influenced. Δ: Varies with part or model.
*The figures above are for reference only. The intensity of magnetic field may vary with each magnetic product or electrical appliance.
*Strength of a magnetic field is in inverse proportion to the square of distance. Therefore, the intensity may significantly differ from moving objects a short distance apart.

(6) Vibration
If the watch is subjected to strong mechanical shock, such as when riding a motorcycle, operating a jack hammer or a chainsaw, it may lose time temporarily.

(7) Temperature
① Do not leave the watch in a place, subject to direct sunlight or high temperature for a long time.
② Do not leave the watch in an extremely cold place for a long time.
③ Note that if the watch is exposed to temperatures outside the normal temperature range of the product for a long time, that the watch becomes to stop, the battery may leak, or the battery life may be shortened.
④ This watch is adjusted to provide stable accuracy (accuracy when worn) in ambient temperature between +5 and 35°C. If the watch has not been worn for a while, it may lose or gain a little time.

(8) Chemicals, gasses, etc.
In the case, please note it may be discolored, transformed or damaged the case, band, dial and the resin parts which if the watch comes into contact with gasses, mercury, or chemicals (thinners, gasoline, various solvents, or cleaners, adhesives, paints, medicines, perfumes, or cosmetics containing any of those substances).

(9) About products and accessory parts
CAUTION
① Please carry out neither decomposition nor reconstruction of our products.
WARNING
② Store the band, the pin and other small parts out of the reach of infants. If any small parts are swallowed, immediately contact a doctor.

(10) Use at high temperature
CAUTION
Do not use the watch at high temperatures, such as in a sauna. You may be burned when the watch heats up.

CAUTION
If you have a skin rash or abnormally irritated skin due to exposure to leather, metal or soft/hard plastics and urethane stop wearing the watch immediately and consult a medical specialist.

Some of our products uses Luminous light paint on the hands and dials. The Luminous light paint is safe paint which stores light without using any radioactive material. It stores light from sunlight and artificial light and emits that light in a dark setting. As the paint discolor the thickness of the paint, surrounding brightness level, the distance from the watch to the light source, and the light absorption level. Please note when is not store enough light energy, the watch may emit weak light or emit light on for only a short time.

◆ How to use the rotating bezel ◆ Water-proof processing band ◆ System reset

Some models have a rotating bezel. Check your watch and please use correctly. Turn the rotating bezel and point the triangle mark (▽) points at the minute hand. After some time has elapsed, you can read the amount of elapsed time by looking at the number (point) on the rotating bezel where the minute hand is currently pointing. By pointing the triangle mark (▽) at a target time in the future, you can read the remaining time. The rotating bezel has the Latched-device with the reverse-rotation prevention system. Therefore it prevents an unprepared turn by the shock, and it can easy to set the scale, too.

Some watch uses the nylon band or the leather band. Turn the rotating bezel and point the triangle mark (▽) points at the minute hand. After some time has elapsed, you can read the amount of elapsed time by looking at the number (point) on the rotating bezel where the minute hand is currently pointing. By pointing the triangle mark (▽) at a target time in the future, you can read the remaining time. The rotating bezel has the Latched-device with the reverse-rotation prevention system. Therefore it prevents an unprepared turn by the shock, and it can easy to set the scale, too.

① Pull out the crown at 2nd position.
② Push the [S1] and [S2] buttons three seconds simultaneously, and leave.
③ Push the button the normal position. The second hand will stop moving. The second hand move 2 second interval, it is not charge fully. Please charge the battery to 1-second interval moving. (See ◆ Guideline to recharge times)
④ Set the stopwatch hands at 0 position, time and date when the second hand is moving the 1-second interval moving. (See ◆ Zero position adjustment of the stopwatch 2 hands and ◆ Time adjustment) (See ◆ How to adjust the date)
These are finish to set the Zero position adjustment the stopwatch 2 hands, time and date.

CAUTION
(1) Maintenance of the case and the band
① Dirt and moisture on the case and band may interfere with the watch functions, cause skin rashes to person with susceptible skin, or soil the cuffs of clothing. Use a soft cloth to wipe off dirt and moisture and keep the watch clean. Especially the band makes direct contact with the skin, remove dirt periodically.
(Case)
Keep the moisture and dirt, then it case corrode or rust. It will be lower non water-proof too. Wipe off dirt, using a soft cloth, etc. Do not use any chemical because it may discolor in the case.
(Metal band)
Keep the moisture and dirt, then it case corrode or rust. And the bands will be lower the durability, the strength. It soil the cuffs of clothing too. Wipe off dirt, using a soft toothbrush with soap water. Be note do not enter the water to the non water resistant watch.
(Leather band)
Keep the moisture and dirt, then it case discolor. And the bands will be lower the durability, the strength. It soil the cuffs of clothing too. Wipe off dirt, using a soft cloth, etc. Do not use any chemical because it may discolor in the case.
(Soft plastic band)
It is not necessary to take special care of urethane or nylon band. However, since some kind of dirt may irritate the skin, wash the band with fresh or soapy water occasionally. Do not use chemicals that might deteriorate the band, break and crack.

Depending on usable years, the material may harden, crack or break. In this case, replace it with a new band.
② Be careful not to bring the case and the band into contact with the mercury (found inside a thermometer) or other chemicals, cosmetics, because they may discolor.
③ Tighten the band so that you can just slip one finger between the band and your wrist, in order to allow air to circulate. Do not store the leather band in high temperature or high humidity conditions.
④ Keep the case and the band may come off, drops when the pin used for the joint part of the case, the band and the joint parts pieces of the metallic band rusts. In rare case, you might also be injured.
⑤ Please stop wearing, in the case the case and the band corrodes become sharp or the band pin jump up. And please consult your purchase shop or the Customer Service.
⑥ Treatment of the rotating bezel
Your watch has the rotation bezel, that become damaged the watch function in the case, when stock dirt exist, under the rotation bezel. Brush off dirt using a soft toothbrush and keep it clean.
⑦ Recommended Overhaul
① We recommend an overhaul which the mechanical watches every two to three years and the analog quartz oscillation watches is every three to four years. It can hold the movement lubrication or liquid leak, dry prevention, abnormal abrasion of the part. It keeps the daily accuracy too. And it can hold the waterproofness when the debased packing replaces, sweat and moisture don't enter the watch.
② When do your watch overhaul, contact to your purchase shop or the Repair Service Center. Please specify "genuine parts" and we also recommend replace the packing and spring bar too.

CAUTION
Make sure to read the warranty card.
1. Warranty
If the watch fails to operate under normal operation conditions within the warranty period, bring it to you r purchase shop or the Repair Service Center, along with its warranty card. We will repair or adjust your watch while it is under warranty free. Please read the warranty card well, the terms of the warranty are described.
2. Possession periods of parts for repair
Normally the repair parts for this watch will be available for seven years after production of the watch is discontinued.
*Repair parts
It is the part of the machine body (movement) for time functions of the product (watch) inside. Other external parts not directly related to the function, such as the crystal, dial, hand, band, or crown, are not considered repair parts covered under the warranty. Replacement of these non-repair parts may use parts different to the originals.
As a rule, your watch repair is possible for the holding period if normal to use. However, the period during which repairs can be made will vary, depending on the operating conditions and environment in which the watch used. In some case, the precision cannot be restored by the watch condition. Therefore, bring your watch and make sure consult to your purchase shop to determine, when you repairs.
4. Moving and gift item
If you cannot go to your purchase shop since you moving or present from someone, contact the Customer Service for repairs.
5. Inquiry about our product
Please refer to "Customer Service" for the inquiry about our products.
6. Other inquiries
If there are any other questions concerning warranty and service, contact the Customer Service.

◆ Warranty and service

◆ Contact Information

< Inquiry by Telephone >
● Customer Service
Telephone: +81-42-847-3380
< Reception of Items for Repair >
● Watch repair center
Seiko Epson Corporation 390 Shiojiri-machi, Shiojiri-shi, Nagano-ken, 399-0796 Japan
Tel: +81-50-3155-8290
< Selling Agency >
EPSON SALES JAPAN CORPORATION
29th Floor, JR Shinjuku Miraia Tower, 4-1-6 Shinjuku, Shinjuku-ku, Tokyo 160-8801 Japan
Tel: +81-3-5919-5211
● Manufacturer >
SEIKO EPSON CORPORATION
Head Office: 3-4-3 Owa, Suwa-Shi, Nagano 392-8502 Japan
Telephone: +81 266-52-3131
2004UPTTY-en-02
©2020 Seiko Epson Corporation